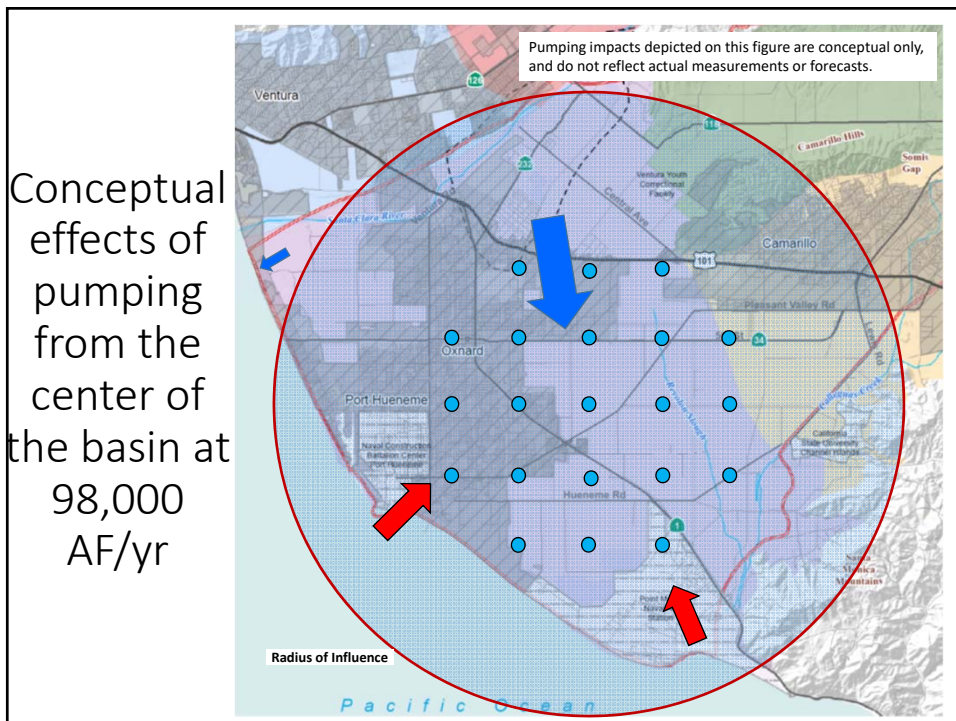
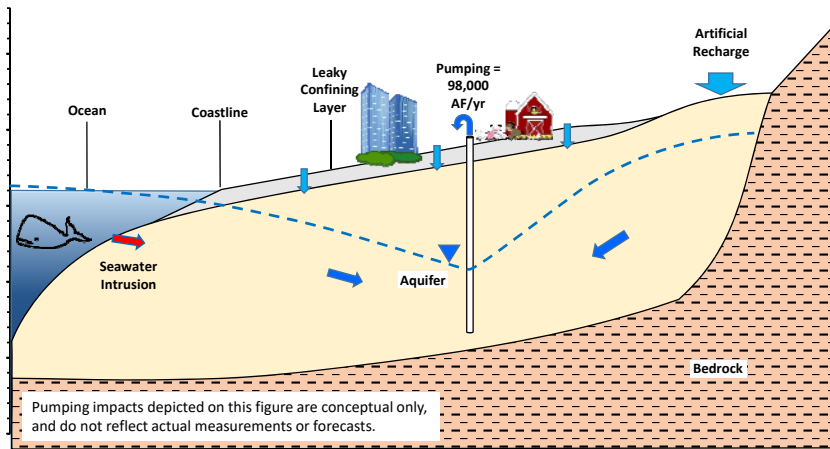


Reported Groundwater Withdrawals – 2015 (total in Oxnard and PV basins = ~98,000 AF)

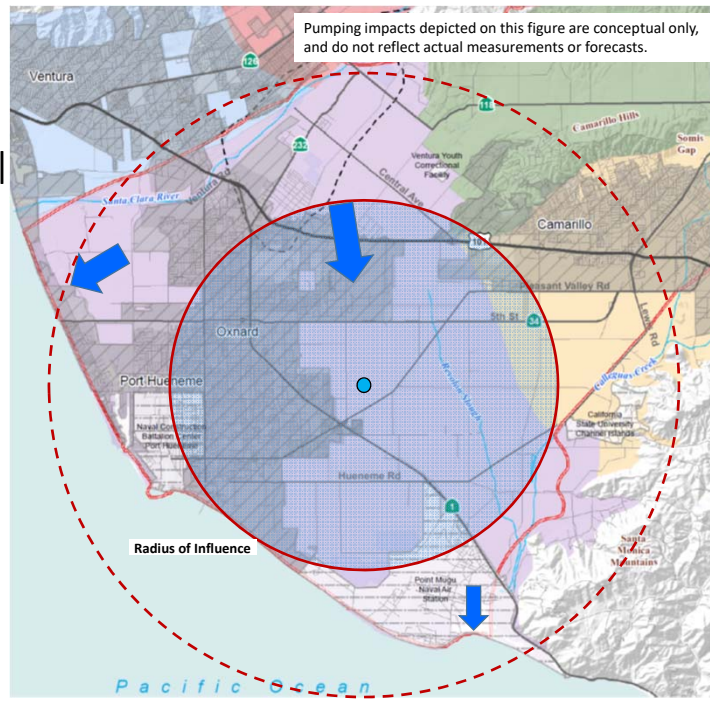


Conceptual effects of pumping from the center of basin at 98,000 AF/yr

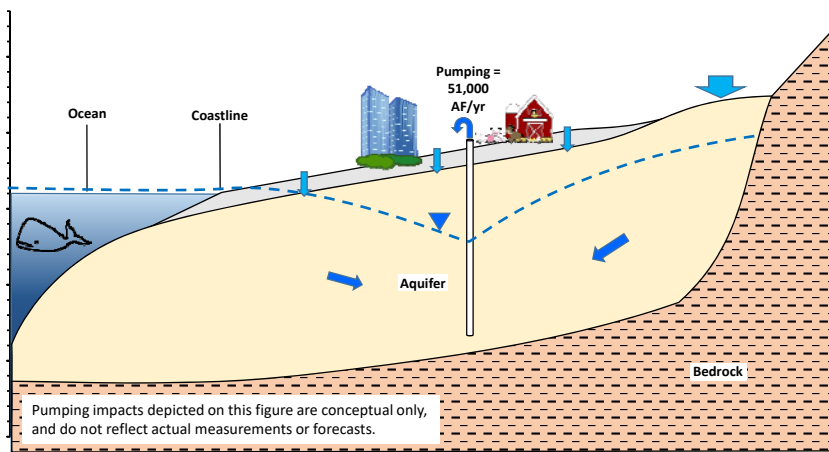


3

Conceptual effects of pumping from the center of basin at 51,000 AF/yr

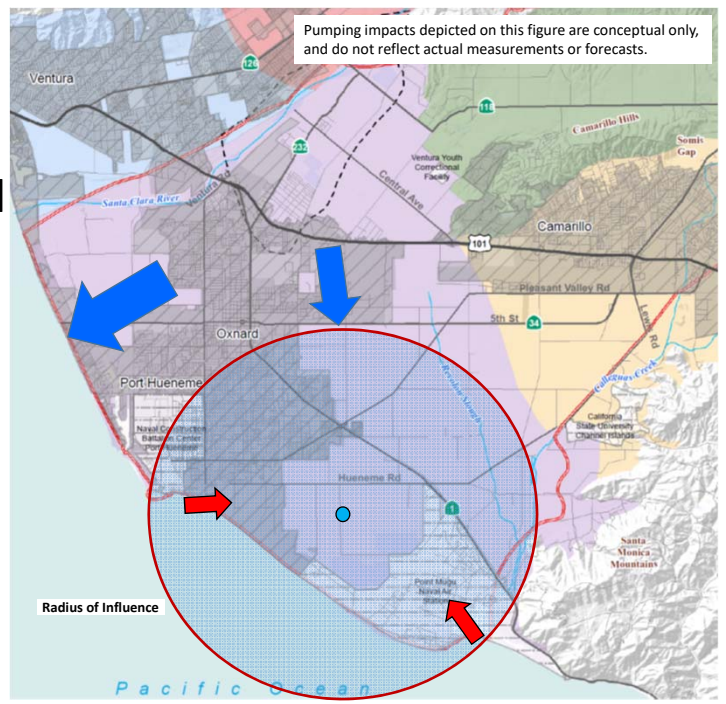


Conceptual effects of pumping from the center of basin at 51,000 AF/yr

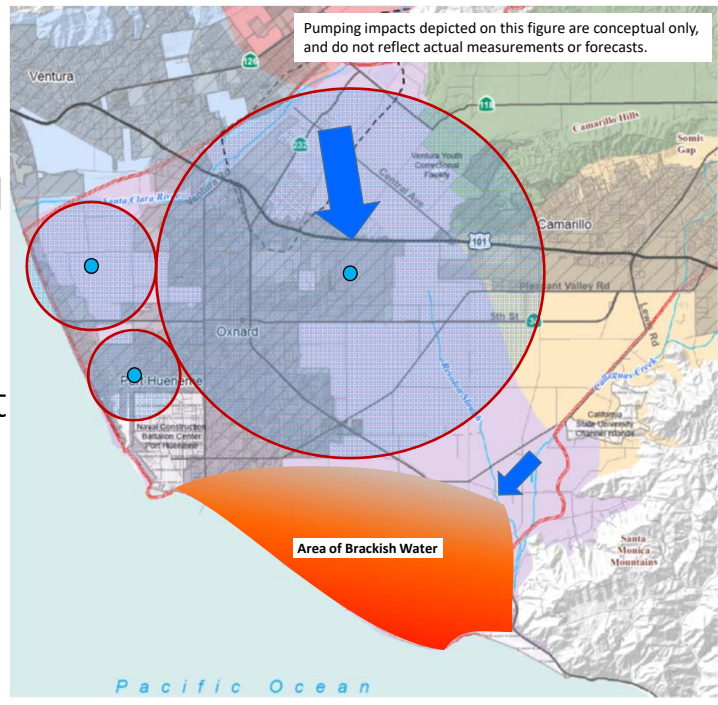


5

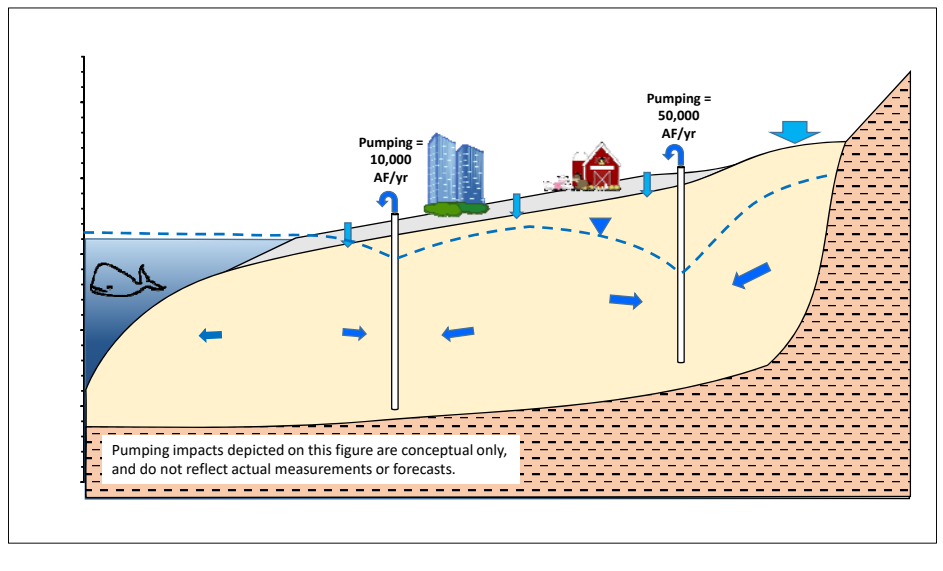
Conceptual effects of pumping near the coast at 51,000 AF/yr



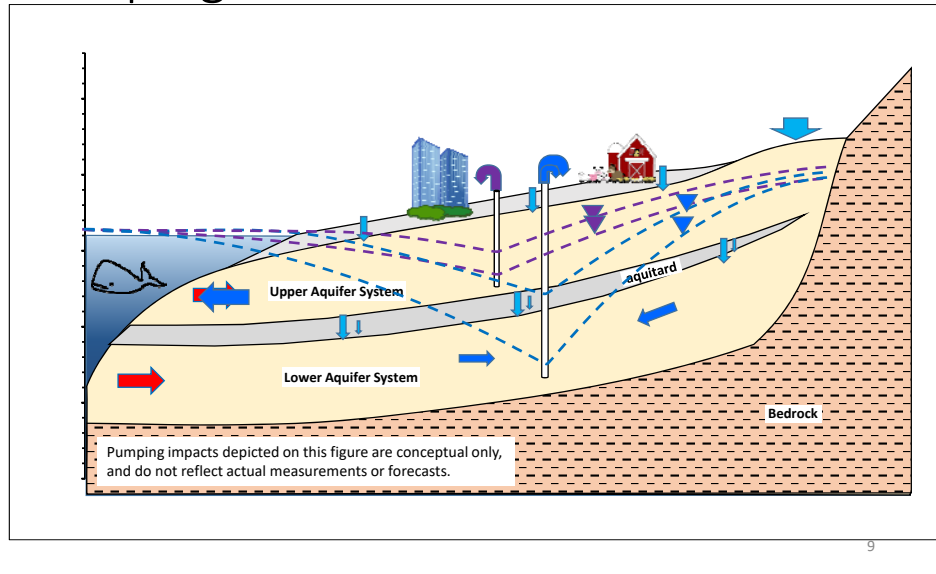
Conceptual effects of pumping far from the coast at 60,000 AF/yr



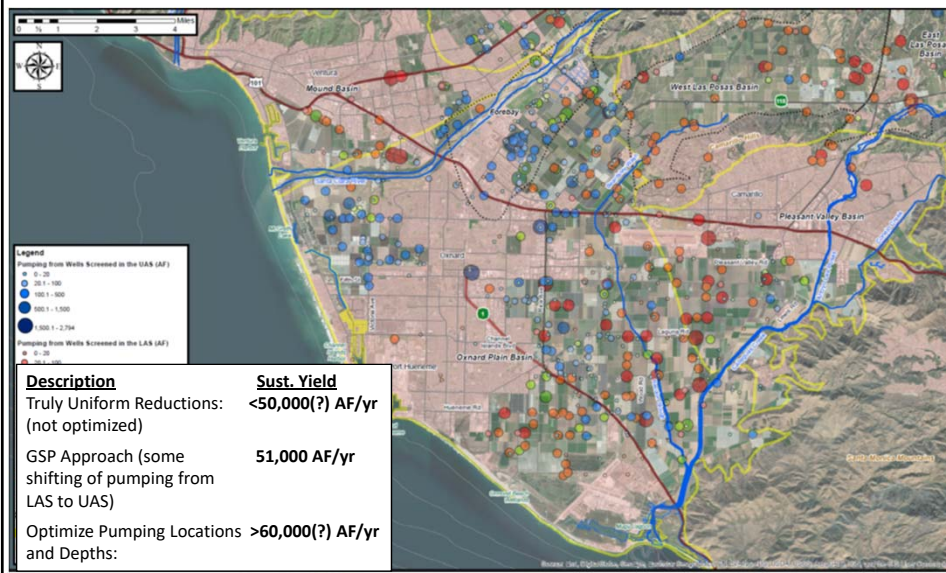
Conceptual effects optimizing pumping at 60,000 AF/yr



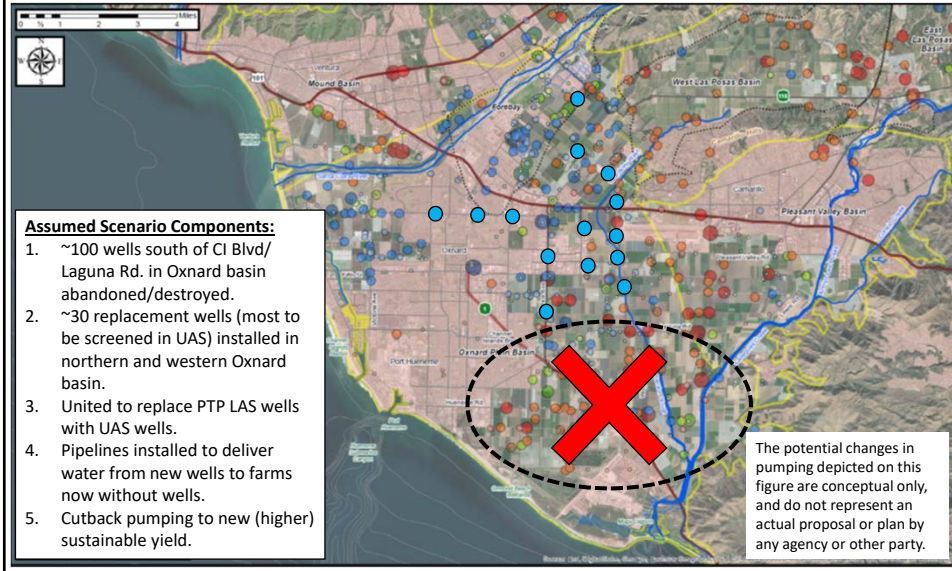
Effects of Shifting the Proportion of Pumping between the UAS vs. LAS



What We Already Know About Potential Effects of Optimizing Pumping Locations and Depths



Potential Optimization Scenario: Shift Pumping Away from Coast, Out of LAS



Mgmt. Areas in the GSPs for Oxnard and PV basins

